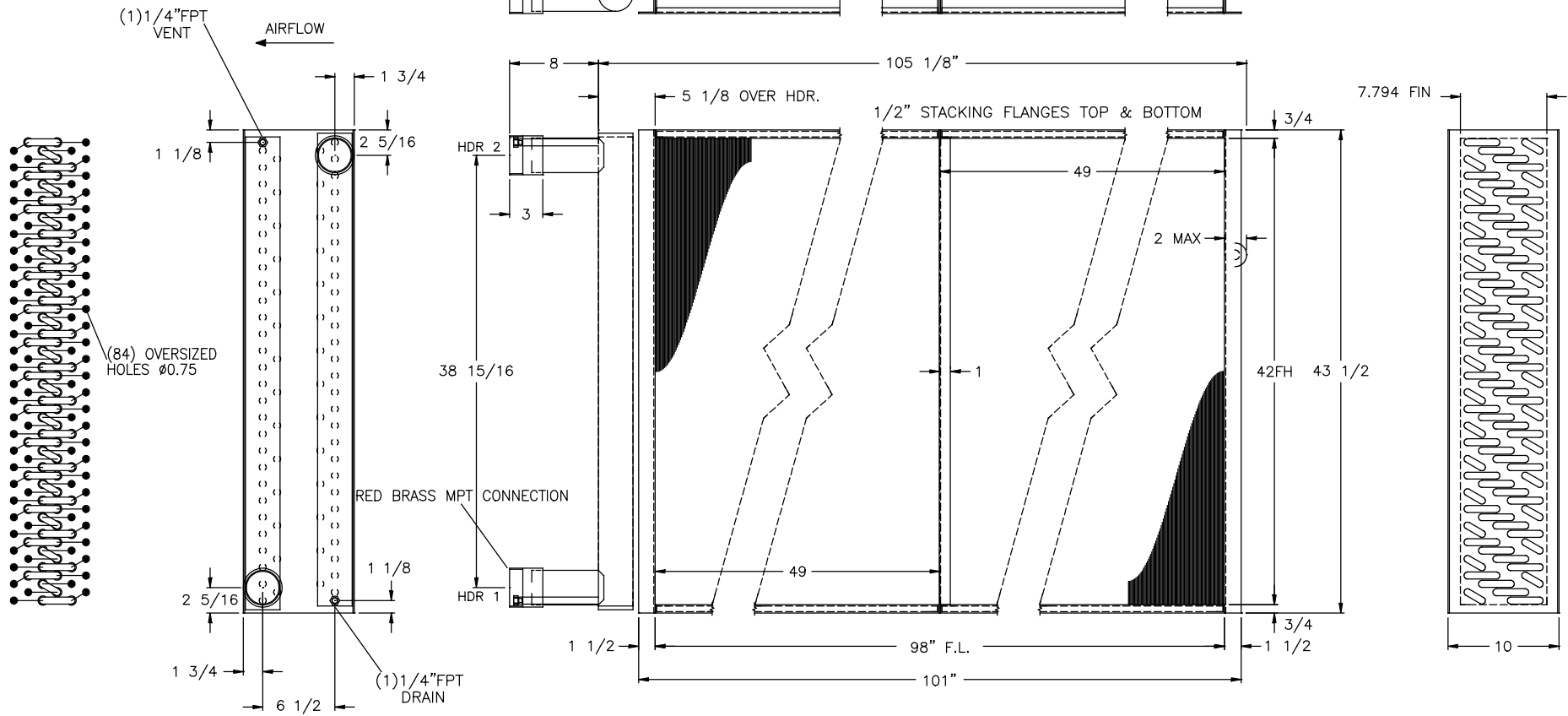
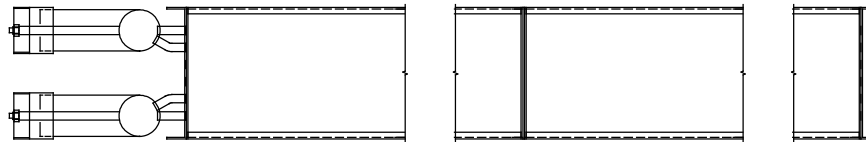


COIL DETAILS

MODEL NUMBER: 5W-06-42.0-11-98.0-42 HANDING: LH
 FINS: 0.01 AL FLAT @ .11 PER INCH
 TUBING: 5/8 OD X .025 CU ON 1.5 X 1.299 CTRS
 CASING: 304L 16 GA.
 HEADER: 1+2 - 3.125" O.D. TYPE 'L' COPPER
 HEADER: 1/4" FPT VENT + 1/4" FPT DRAIN
 CONNS: RED BRASS MPT CONNECTION 3"
 ROWS DEEP: 6 TUBES HIGH: 28
 CIRCUITS: 42
 VERSION: Coileary_MOL v 1.0.233

STAINLESS STEEL CASING



CSA FILE NO.: 242755 UL FILE NO.: SA 32693		MODEL NO.: DC6 COIL TYPE: CHILLED WATER		DIRECT COIL INC. 5055 TAYLOR KIDD BLVD., MILLHAVEN, ONT., K0H 1G0	
PROPRIETARY AND CONFIDENTIAL THE INFORMATION CONTAINED IN THIS DRAWING IS THE SOLE PROPERTY OF DIRECT COIL INC. ANY REPRODUCTION IN PART OR AS A WHOLE WITHOUT THE WRITTEN PERMISSION OF DIRECT COIL INC. IS PROHIBITED					
PROJECT NAME-ITEM					
ITEM TAG					
DATE	ENGINEER	DESIGNER	MD	APP'D BY	VG
11/18/2016					
CUSTOMER			DWG. NO.		
			DC6-16034		

HOT WATER COIL REPORT

5055 Taylor Kidd Blvd T:(613) 544-2200
 Millhaven, Ontario F:(613) 544-7779
 Canada,
 K0H 1G0 E-Mail: info@directcoil.com
 Website: directcoil.com

Company: DC Website
Contact:
Tel:
Fax or Email:

Date: January 15, 2020
Reference:
Prepared By:
Project Name: Performance & Std price for Overstock coils

Coil Tag: DC6-16034
Coil Model Number: 5W-06-42.0-11-98.0-84
Item: 003, Coil Hand: Left

Physical Data

Number Of Coils	One (1)	Tube Diameter	5/8 1.50 x 1.299
Fin Height (Per Coil)	42.000"	Tube Turbulators	No
Fin Length (Per Coil)	98.000"	Tube Material	Copper - 0.018 Plain
Number Of Rows Deep	Six (6)	Fin Material	Aluminum 0.010
Circuit Ratio	3.0	Fin Style	Flat
Fins Per Inch	Eleven (11)	Connection Type	Victaulic Groove Red Brass
Supply Connection Size	3"	Coil Weight (Per Coil)[operating]	693 [886] LBS
Return Connection Size	3"	Coil Internal Volume (Per Coil)	23.980 gal
Header Material	Copper (L)	Casing Style	Standard
		Casing Material	Stainless Steel 16 gauge

Air Data

Total Airflow (All Coils)	12,863 SCFM
Airflow (Per Coil)	12,863 SCFM
Face Velocity	450 FPM
Altitude	0.00 FT
Entering Dry Bulb	55.00 °F
Leaving Dry Bulb	149.77 °F
Air Pressure Drop	0.55" WG
Fouling Factor	0.0000 ft ² °F h/Btu

Fluid Data

Fluid Type	Water
Glycol Ratio	0 %
Entering Fluid Temp	180.00 °F
Leaving Fluid Temp	160.00 °F
Fluid Flow Per Coil (Total)	136.55 GPM (136.55)
Tube Velocity	1.79 FPS
Fluid Pressure Drop	4.65' WG
Fouling Factor	0.0000 ft ² °F h/Btu

Capacity

Capacity Per Coil (Total) 1,330.21 MBH (1,330.21)

Notes:

1. Certified in accordance with the AHRI Forced-Circulation Air-Cooling and Air-Heating Coils Certification Program which is based on AHRI Standard 410 within the Range of Standard Rating Conditions listed in Table 1 of the Standard. Certified units may be found in the AHRI Directory at www.ahrirectory.org



Software version: 0.99.8166